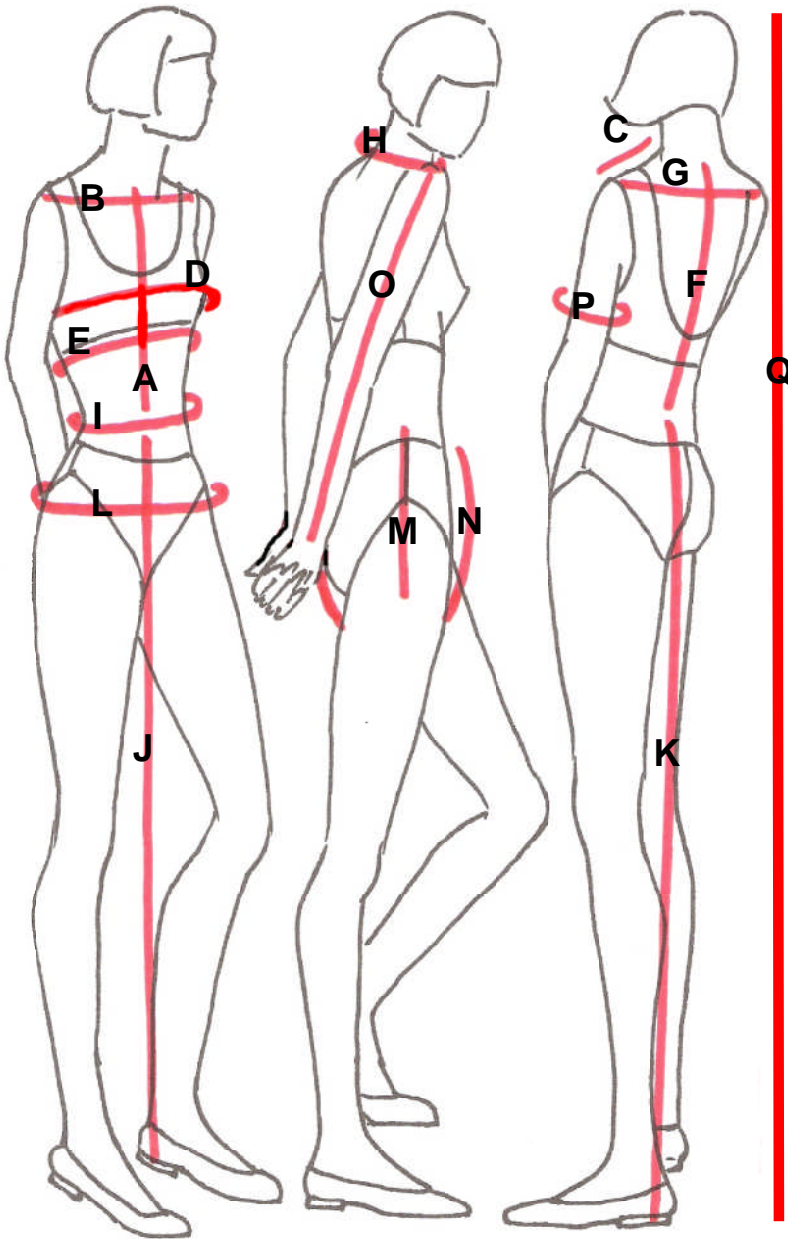


Print this measurement sheet off, take your measurements and fill it out. Keep this measurement sheet in your projects folder, or fix it to your sewing room wall; this way, you'll always know which HotPatterns size to choose.

Measurement Sheet



	Where to measure	
A	Center front (nape-waist)	
B	Front shoulder width	
C	Shoulder length	
D	Bust circumference	
E	Under bust	
F	Center back (nape- waist)	
G	Back shoulder width	
H	Neck circumference	
I	Natural waist	
J	Center front waist-floor	
K	Center back waist-floor	
L	Hip circumference	
M	Crotch depth	
N	Crotch length	
O	Shoulder- wrist	
P	Bicep circumference	
Q	Height	

Take your measurements wearing well-fitting underwear, and don't be tempted to 'cheat' by making them bigger or smaller than they really are! Also, make sure you use the same unit of measurement throughout-if you're an Imperial girl, then use inches, if you're a Metric girl, use centimeters, but whatever you do don't mix them up.